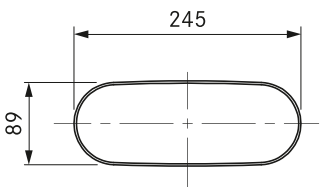
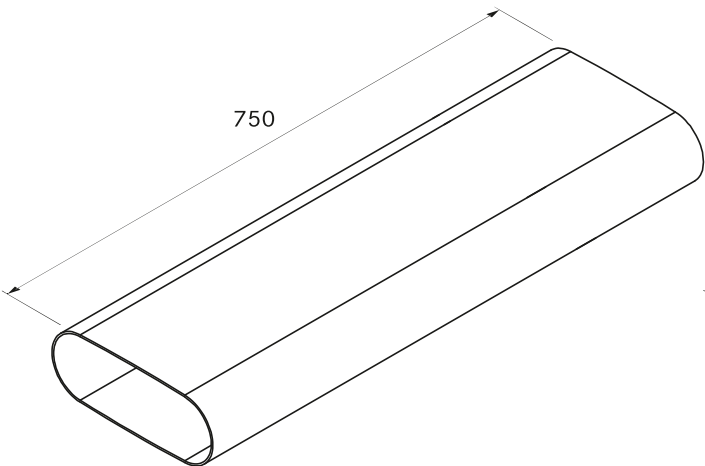


# EF750/1

BORA Ecotube shallow duct 750mm



### Technical data

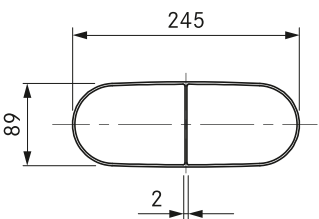
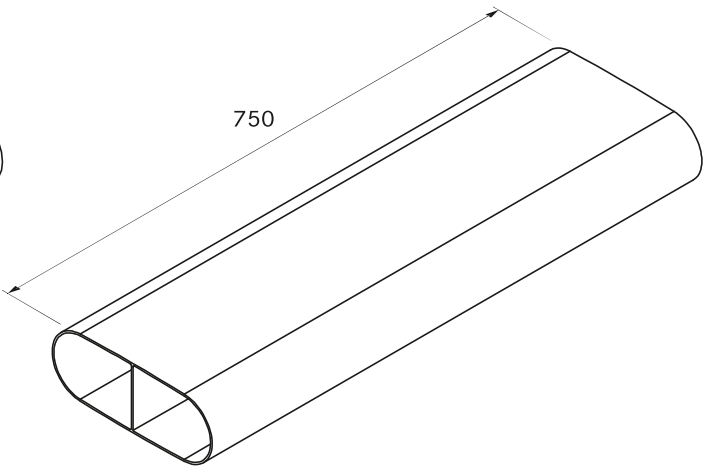
Dimensions (width x depth x height)	245 x 750 x 89 mm
Weight	1.6 kg
Material property	B1 according to DIN 4102-1

### Product description

- Optimal extraction performance with the lowest possible noise level
- own duct system
- Full flexibility in the exhaust ducting
- 100% tight without additional taping
- Individually shortenable
- Polished inner walls and oval cross section
- Complete BORA system

# EFS750/1

BORA Ecotube shallow duct with a bar 750mm



### Technical data

Dimensions (width x depth x height)	245 x 750 x 89 mm
Weight	1.7 kg
Material property	B1 according to DIN 4102-1

### Product description

- Especially suited for installation in the floor structure
- Optimal extraction performance with the lowest possible noise level
- own duct system
- Full flexibility in the exhaust ducting
- 100% tight without additional taping
- Individually shortenable
- Polished inner walls and oval cross section
- Complete BORA system

# EF47/1

BORA Ecotube shallow duct 47mm



**Technical data**

Dimensions (width x depth x height)	245 x 47 x 89 mm
Weight	0.09 kg
Material property	B1 according to DIN 4102-1

**Product description**

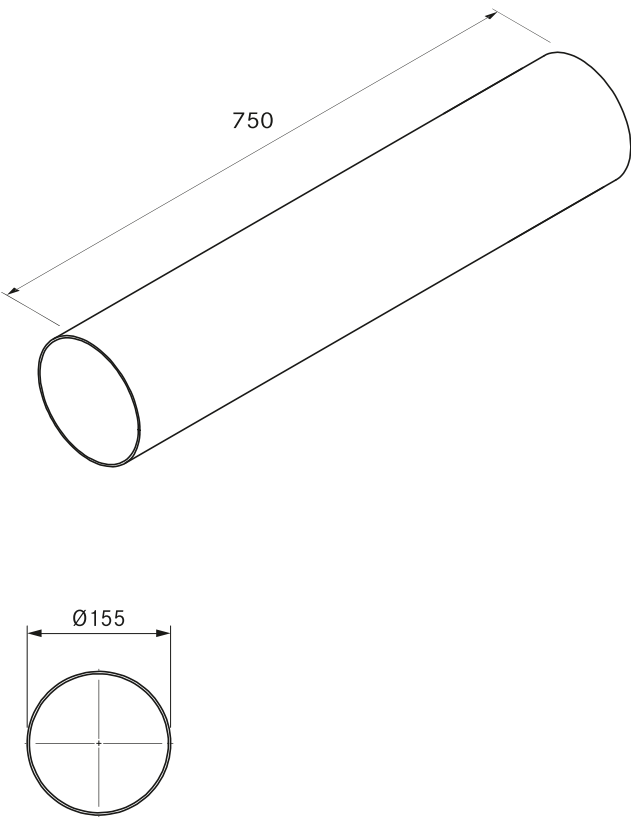
- Optimal extraction performance with the lowest possible noise level
- own duct system
- Full flexibility in the exhaust ducting
- 100% tight without additional taping
- Polished inner walls and oval cross section
- Complete BORA system

**product- and planning instructions**

- Shallow duct for direct connection of two shallow Ecotube sockets

# ER750/1

BORA Ecotube round duct, 750mm



**Technical data**

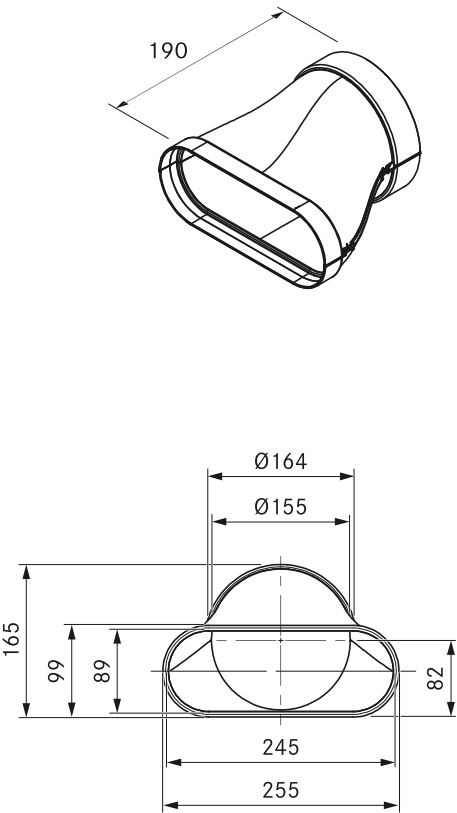
Dimensions (diameter)	Ø 155 x 750 mm
Weight	1.6 kg
Material property	B1 according to DIN 4102-1

**Product description**

- Optimal extraction performance with the lowest possible noise level
- own duct system
- Full flexibility in the exhaust ducting
- 100% tight without additional taping
- Individually shortenable
- Complete BORA system

# EFRG/1

BORA Ecotube bridge flat round straight incl. sealing material



**Technical data**

Dimensions (width x depth x height)	255 x 190 x 165 mm
Weight	0.3 kg
Material property	B1 according to DIN 4102-1

**Product description**

- Optimal extraction performance with the lowest possible noise level
- own duct system
- Full flexibility in the exhaust ducting
- 100% tight without additional taping
- Polished inner walls and oval cross section
- Including required Ecotube seals
- Complete BORA system

**Scope of delivery**

- 1 x flat seal EFD
- 1 x round seal ERD

**Accessories**

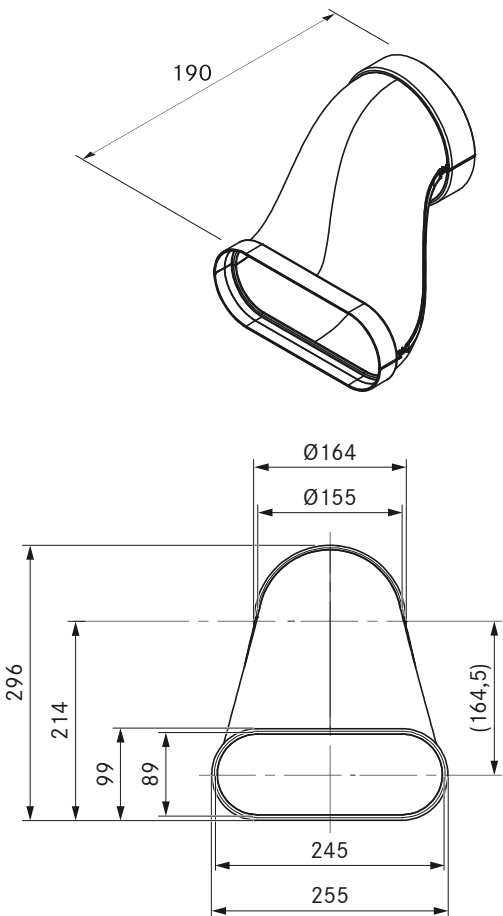
- EFMS/ERMS mounting bracket set

**product- and planning instructions**

- Moulded part with a shallow sleeve form
- Moulded part with a round sleeve form

# EFRV/1

BORA Ecotube bridge flat round offset incl. sealing material



**Technical data**

Dimensions (width x depth x height)	255 x 190 x 296 mm
Weight	0.35 kg
Material property	B1 according to DIN 4102-1

**Product description**

- Optimal extraction performance with the lowest possible noise level
- own duct system
- Full flexibility in the exhaust ducting
- 100% tight without additional taping
- Polished inner walls and oval cross section
- Including required Ecotube seals
- Complete BORA system

**Scope of delivery**

- 1 x flat seal EFD
- 1 x round seal ERD

**Accessories**

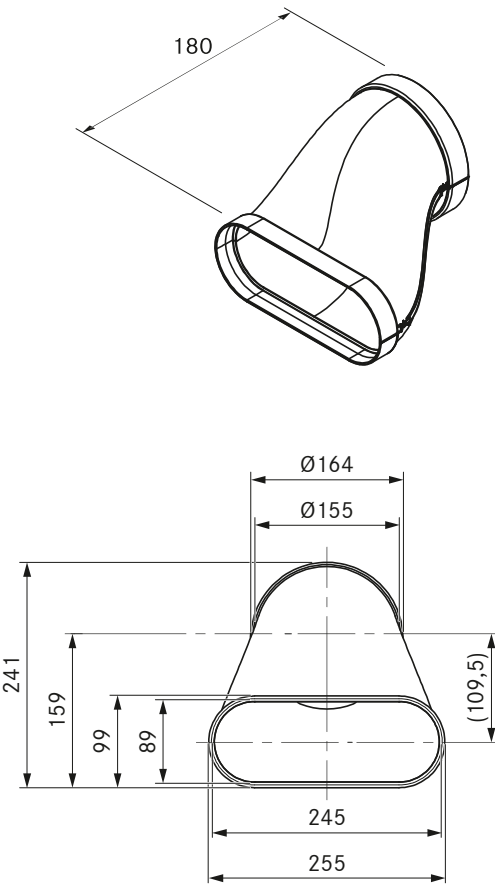
- EFMS/ERMS mounting bracket set

**product- and planning instructions**

- Moulded part with a shallow sleeve form
- Moulded part with a round sleeve form

# EFRV110/1

BORA Ecotube transition, flat round offset 110mm  
incl. sealing material



### Technical data

Dimensions (width x depth x height)	255 x 180 x 241 mm
Weight	0.3 kg
Material property	B1 according to DIN 4102-1

### Product description

- Optimal extraction performance with the lowest possible noise level
- own duct system
- Full flexibility in the exhaust ducting
- 100% tight without additional taping
- Polished inner walls and oval cross section
- Including required Ecotube seals
- Complete BORA system

### Scope of delivery

- 1 x flat seal EFD
- 1 x round seal ERD

### Accessories

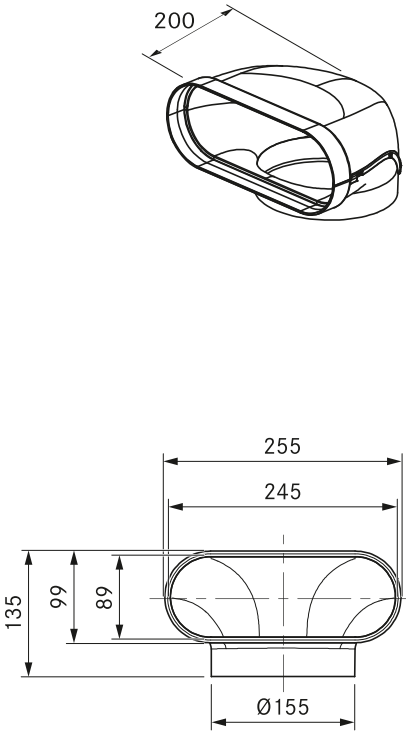
- EFMS/ERMS mounting bracket set

### product- and planning instructions

- Moulded part with a shallow sleeve form
- Moulded part with a round sleeve form

# EFR90/1

BORA Ecotube bridge 90° flat round incl. sealing material



### Technical data

Dimensions (width x depth x height)	255 x 200 x 135 mm
Weight	0.32 kg
Material property	B1 according to DIN 4102-1

### Product description

- Optimal extraction performance with the lowest possible noise level
- own duct system
- Full flexibility in the exhaust ducting
- 100% tight without additional taping
- Polished inner walls and oval cross section
- Including required Ecotube seals
- Complete BORA system

### Scope of delivery

- 1 x flat seal EFD

### Accessories

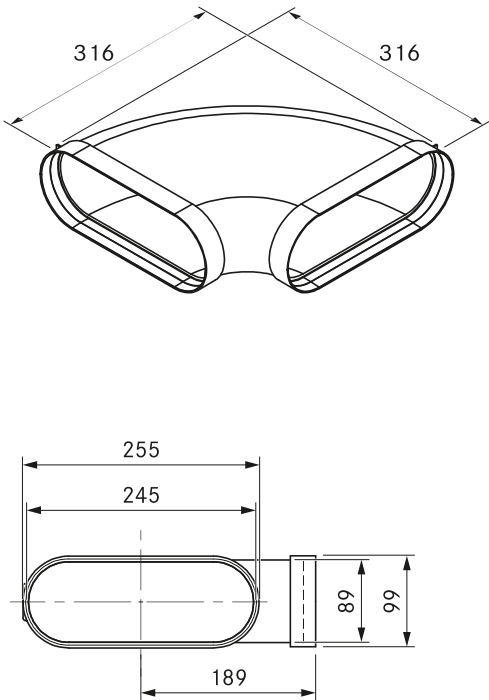
- EFMS mounting bracket set

### product- and planning instructions

- Moulded part with a shallow sleeve form

# EFBH90/1

BORA Ecotube bend 90° flat horizontal incl. sealing material



**Technical data**

Dimensions (width x depth x height)	316 x 316 x 99 mm
Weight	0.75 kg
Material property	B1 according to DIN 4102-1

**Product description**

- Optimal extraction performance with the lowest possible noise level
- own duct system
- Full flexibility in the exhaust ducting
- 100% tight without additional taping
- Material class B1
- Polished inner walls and oval cross section
- Including required Ecotube seals
- Complete BORA system

**Scope of delivery**

- 2 x flat seal EFD

**Accessories**

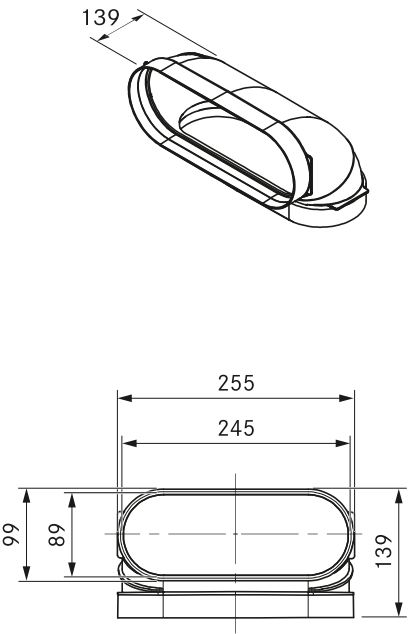
- EFMS mounting bracket set

**product- and planning instructions**

- Moulded part with two shallow sleeve forms

# EFBV90/1

BORA Ecotube bend 90° flat vertical incl. sealing material



**Technical data**

Dimensions (width x depth x height)	255 x 139 x 139 mm
Weight	0.35 kg
Material property	B1 according to DIN 4102-1

**Product description**

- Optimal extraction performance with the lowest possible noise level
- own duct system
- Full flexibility in the exhaust ducting
- 100% tight without additional taping
- Material class B1
- Polished inner walls and oval cross section
- Including required Ecotube seals
- Complete BORA system

**Scope of delivery**

- 2 x flat seal EFD

**Accessories**

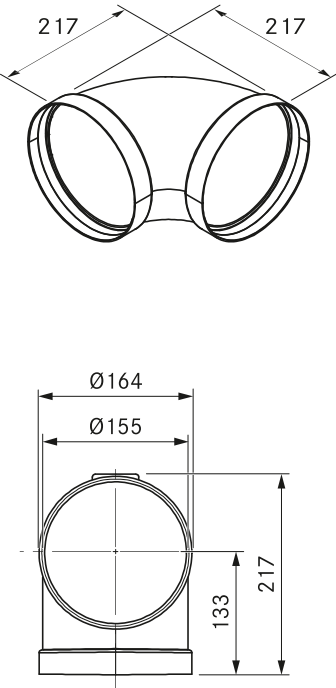
- EFMS mounting bracket set

**product- and planning instructions**

- Moulded part with two shallow sleeve forms

# ERB90/1

BORA Ecotube bend 90° round incl. sealing material



### Technical data

Dimensions (width x depth x height)	Ø 164 x 217 x 217 mm
Weight	0.37 kg
Material property	B1 according to DIN 4102-1

### Product description

- Optimal extraction performance with the lowest possible noise level
- own duct system
- Full flexibility in the exhaust ducting
- 100% tight without additional taping
- Material class B1
- Including required Ecotube seals
- Complete BORA system

### Scope of delivery

- 2 x round seal ERD

### Accessories

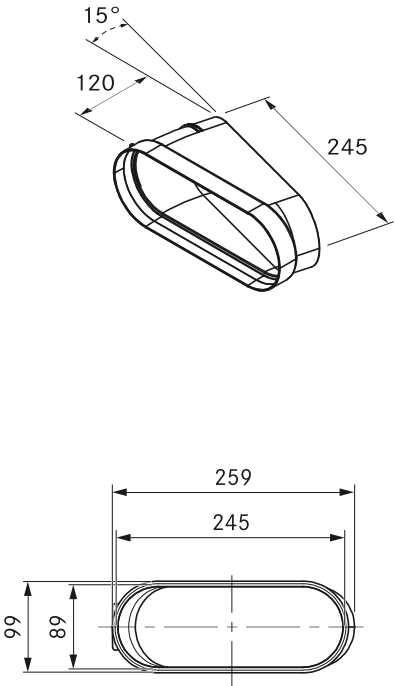
- ERMS mounting bracket set

### product- and planning instructions

- Moulded part with two round sleeve forms

# EFBH15/1

BORA Ecotube bend 15° flat horizontal incl. sealing material



### Technical data

Dimensions (width x depth x height)	259 x 120 x 99 mm
Weight	0.21 kg
Material property	B1 according to DIN 4102-1

### Product description

- Optimal extraction performance with the lowest possible noise level
- own duct system
- Allows easy directional adjustments
- Full flexibility in the exhaust ducting
- 100% tight without additional taping
- Material class B1
- Polished inner walls and oval cross section
- Including required Ecotube seals
- Complete BORA system

### Scope of delivery

- 1 x flat seal EFD

### Accessories

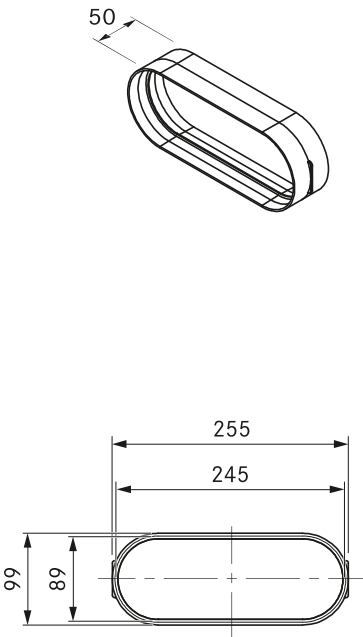
- EFMS mounting bracket set

### product- and planning instructions

- Moulded part with a shallow sleeve form

# EFV/1

BORA Ecotube duct connection flat incl. sealing material



### Technical data

Dimensions (width x depth x height)	255 x 50 x 99 mm
Weight	0.12 kg
Material property	B1 according to DIN 4102-1

### Product description

- own duct system
- Full flexibility in the exhaust ducting
- 100% tight without additional taping
- Material class B1
- Polished inner walls and oval cross section
- Including required Ecotube seals
- Complete BORA system

### Scope of delivery

- 2 x flat seal EFD

### Accessories

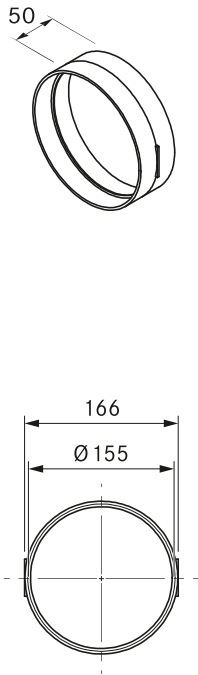
- EFMS mounting bracket set

### product- and planning instructions

- Moulded part with two shallow sleeve forms

# ERV/1

BORA Ecotube duct connection round incl. sealing material



### Technical data

Dimensions (diameter)	Ø 164 x 50 mm
Weight	0.1 kg
Material property	B1 according to DIN 4102-1

### Product description

- own duct system
- Full flexibility in the exhaust ducting
- Material class B1
- 100% tight without additional taping
- Including required Ecotube seals
- Complete BORA system

### Scope of delivery

- 2 x round seal ERD

### Accessories

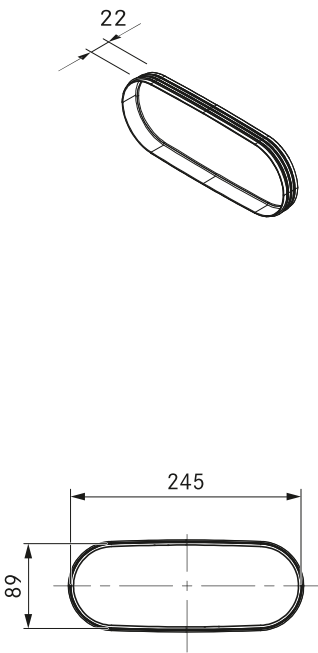
- ERMS mounting bracket set

### product- and planning instructions

- Moulded part with two round sleeve forms

# EFD/1

BORA Ecotube flat seal



**Technical data**

Dimensions (width x depth x height)	245 x 22 x 89 mm
Weight	0.04 kg
Material property	Self-extinguishing pursuant to DIN 75200

**Product description**

- own duct system
- Full flexibility in the exhaust ducting
- 100% tight without additional taping
- Complete BORA system

**product- and planning instructions**

- Sealing material is included in the scope of delivery in the case of moulded parts with a socket design

# ERD/1

BORA Ecotube round seal



**Technical data**

Dimensions (diameter)	Ø 155 x 22 mm
Weight	0.03 kg
Material property	Self-extinguishing pursuant to DIN 75200

**Product description**

- own duct system
- Full flexibility in the exhaust ducting
- 100% tight without additional taping
- Complete BORA system

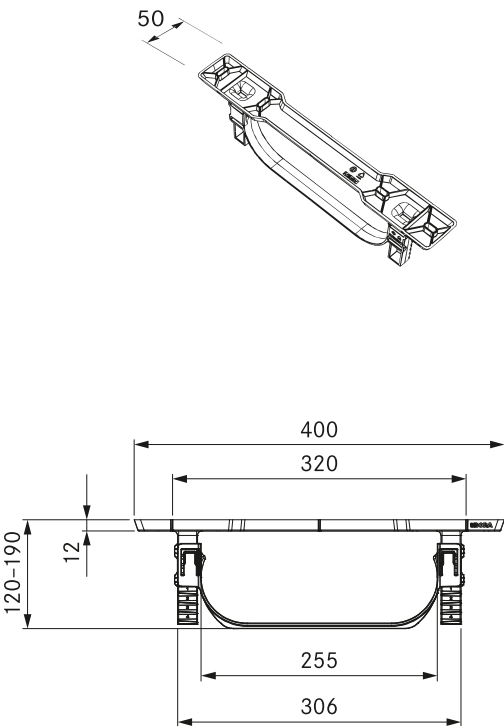
**product- and planning instructions**

- Sealing material is included in the scope of delivery in the case of moulded parts with a socket design



# EFMS/1

BORA Ecotube installation kit flat



**Technical data**

Dimensions (width x depth x height)	400 x 50 x 120 – 190 mm
Weight	0.15 kg

**Product description**

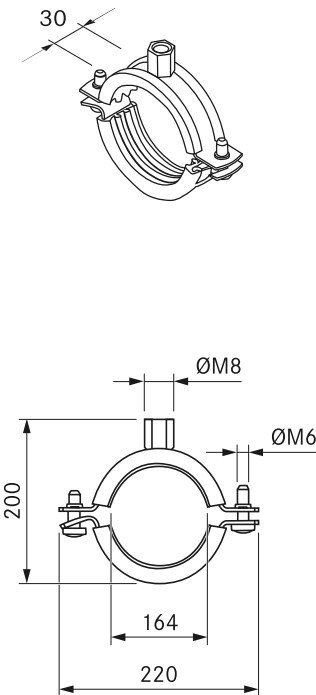
- own duct system
- Material class B1
- Complete BORA system

**product- and planning instructions**

- Fixing elements must be provided at the installation site
- The EFMS clamps the connection of the moulded parts
- It is recommended that an assembly set be used for each Ecotube duct section with a socket design

# ERMS/1

BORA Ecotube installation set round



**Technical data**

Dimensions (width x depth x height)	220 x 30 x 200 mm
Weight	0.45 kg

**Product description**

- own duct system
- Complete BORA system
- Dowels included in the scope of delivery

**Scope of delivery**

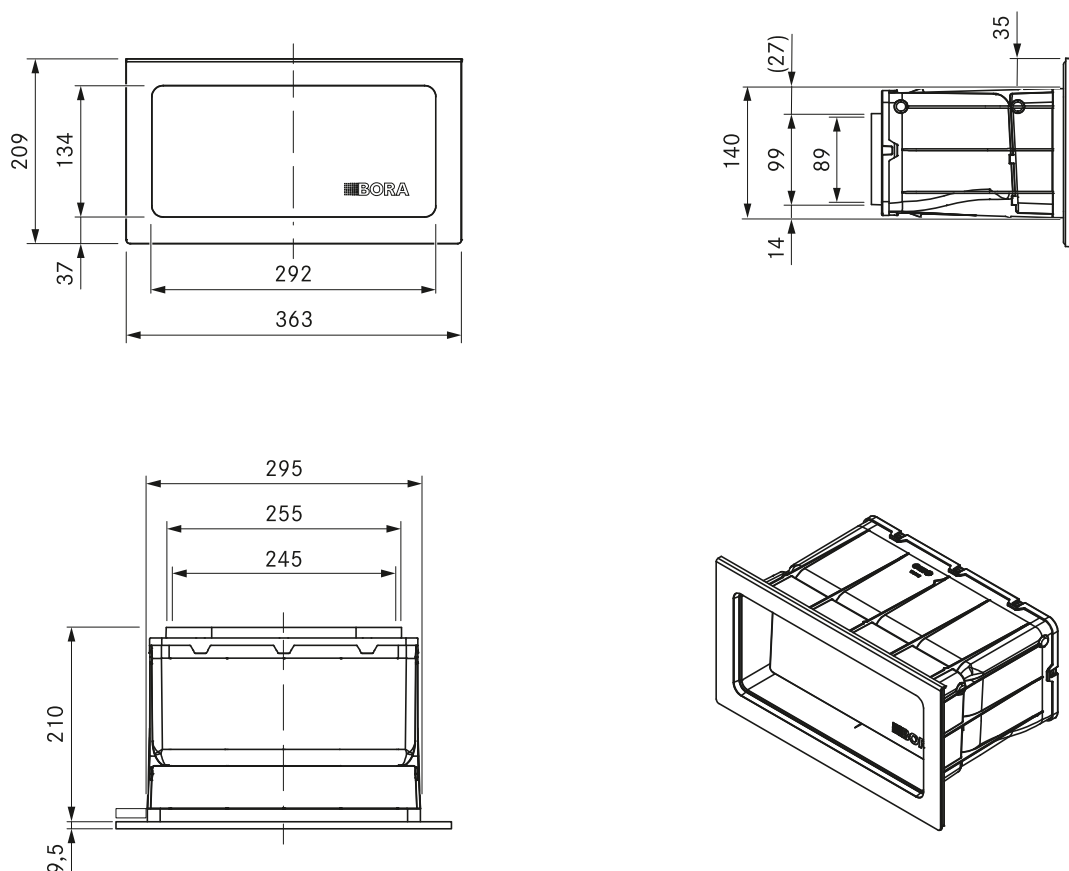
- Pipe clip
- M8 hanger bolt
- Corresponding dowel

**product- and planning instructions**

- Fixing elements must be provided at the installation site
- The ERMS clamps the connection of the moulded parts
- It is recommended that an assembly set be used for each Ecotube duct section with a socket design

# UEBF/1

BORA 3box wall sleeve incl. sealing material



## Technical data

Wall sleeve dimensions (WxDxH)	290 x 210 x 140 mm
Cover dimensions (WxDxH)	363 x 7.5 x 209 mm
Weight (incl. accessories/packaging)	approx. 2, 8 kg
Material	Plastic / stainless steel
duct connection	BORA Ecotube
U-value according to EN ISO 12567-1	1,1 W/(m²K)

## Product description

- Optimal extraction performance with the lowest possible noise level
- Purely mechanical operation
- Two flaps with EPS insulation
- Outstanding insulation value
- Integrated water drainage to the outside
- Low pressure resistance during operation
- Optimised opening pressure
- UV resistant materials
- 100% tight without additional taping
- Including required Ecotube seals

## Scope of delivery

- UEBF BORA 3box
- 6 x mounting wedges made of EPS
- operating and installation instructions
- 1 x flat seal EFD

## Accessories

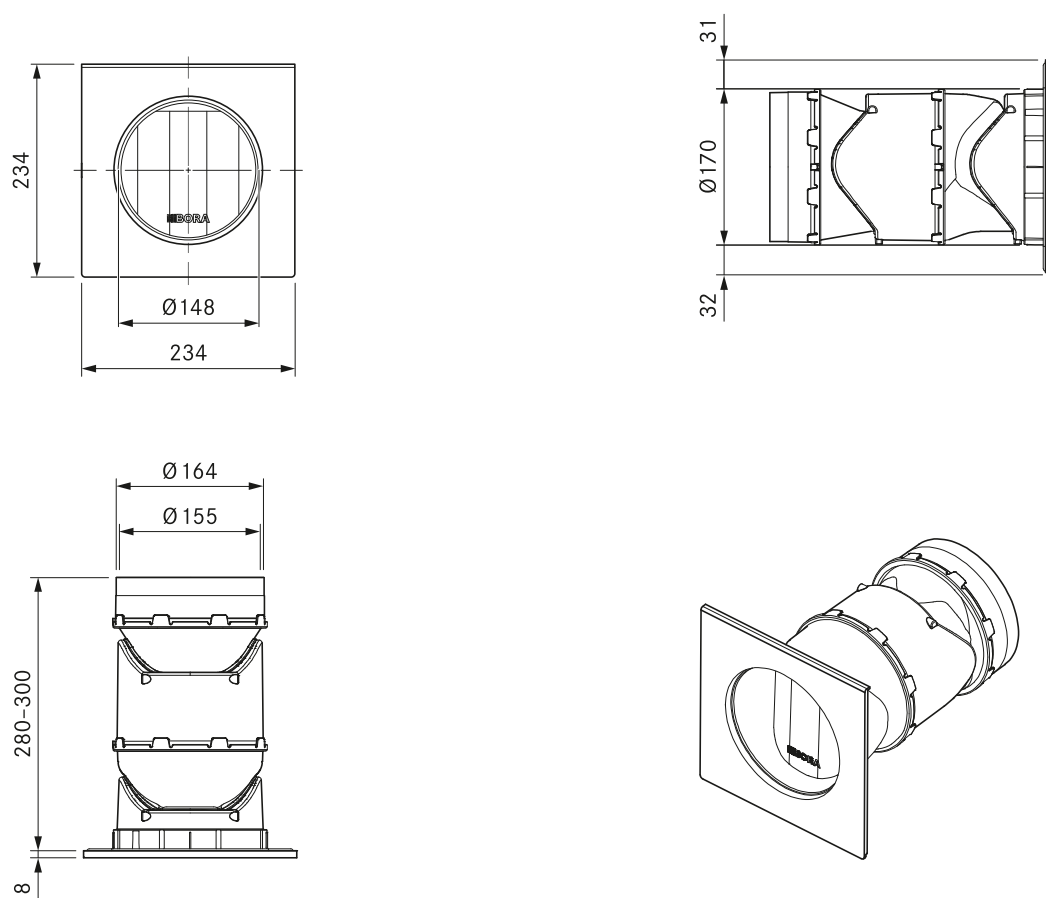
- BORA 3box wall sleeve safety guard UEBFES

## product- and planning instructions

- Wall opening: 310 x 155 mm
- Ecotube duct connection with a shallow sleeve form
- Suitable for a minimum wall depth of 200 mm
- The wall sleeve must not be installed rotated 180°, vertical or with the exhaust opening facing downwards
- The safety guard UEBFES is to be used if the distance between the fan exhaust opening and the wall sleeve exhaust opening is less than 900 mm in the case of a straight exhaust duct
- Must expel air in a straight line regardless of the weather conditions

# UEBR/1

BORA 3box wall sleeve round incl. sealing material



## Technical data

Wall sleeve dimensions (WxDxH)	Ø 170 x 280 – 300 mm
Cover dimensions (WxDxH)	234 x 8 x 234 mm
Weight (incl. accessories/packaging)	Approx. 2.0 kg
Material	Plastic / stainless steel
duct connection	BORA Ecotube
U-value according to EN ISO 12567-1	1,5 W/(m²K)

## Product description

- Purely mechanical operation
- Two flaps with EPS insulation
- Outstanding insulation value
- Shortenable sleeve design
- Optimised opening pressure
- Reduced installation effort
- Plaster cover
- Integrated water drainage to the outside
- Low pressure resistance during operation
- UV resistant materials

## Scope of delivery

- BORA 3box UEBR
- Plaster cover
- installation instructions
- 1 x round seal ERD

## Accessories

- BORA 3box wall sleeve round safety guard UEBRES

## product- and planning instructions

- Core hole diameter Ø180 mm
- Duct connection Ecotube with a round bushing design
- Bushing length 45 mm (can be shortened by 20 mm)
- Suitable for a minimum wall depth of 280 mm
- The wall sleeve must not be installed rotated 180°, vertical or with the exhaust opening facing downwards
- The safety guard UEBRES is to be used if the distance between the fan exhaust opening and the wall sleeve exhaust opening is less than 900 mm in the case of a straight exhaust duct
- Must expel air in a straight line regardless of the weather conditions