

EFBH90

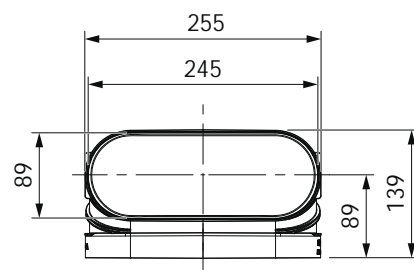
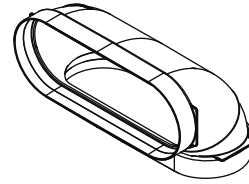
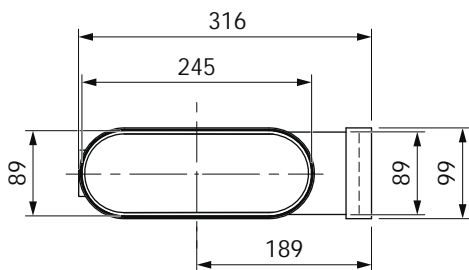
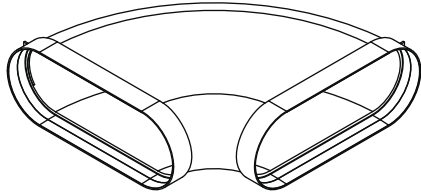
BORA Ecotube shallow, horizontal 90° bend

EFBV90

BORA Ecotube shallow, vertical 90° bend

BORA

BORA Universal
BORA Ecotube



Technical data

Dimensions (WxDxH)	316 x 316 x 99 mm
Material properties	V0 acc. to UL94, B1 acc. to DIN 4102-1
Number of seals required	2 x EFD
Weight	0.75 kg

Accessories

- EFMS mounting bracket set

Planning instructions

- Moulded part with two shallow sleeve forms

Technical data

Dimensions (WxDxH)	255 x 139 x 139 mm
Material properties	V0 acc. to UL94, B1 acc. to DIN 4102-1
Number of seals required	2 x EFD
Weight	0.35 kg

Accessories

- EFMS mounting bracket set

Planning instructions

- Moulded part with two shallow sleeve forms