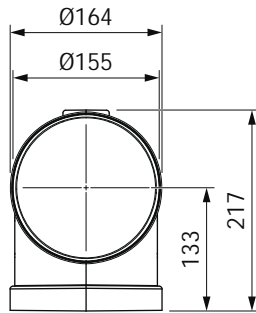
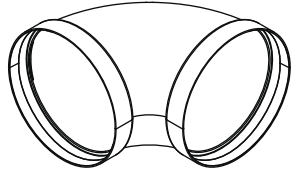


# ERB90

BORA Ecotube round 90° bend



## Technical data

Dimensions (WxDxH)	164 x 217 x 217 mm
Material properties	V0 acc. to UL94, B1 acc. to DIN 4102-1
Number of seals required	2 x ERD
Weight	0.37 kg

## Accessories

- ERMS mounting bracket set

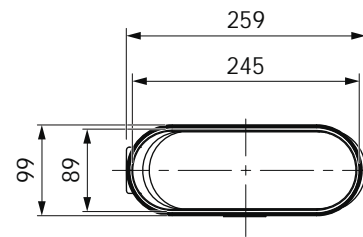
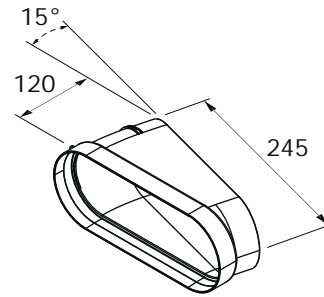
## Planning instructions

- Moulded part with two round sleeve forms

# EFBH15



BORA Ecotube shallow, horizontal 15° bend



## Technical data

Dimensions (WxDxH)	259 x 120 x 99 mm
Material properties	V0 acc. to UL94, B1 acc. to DIN 4102-1
Number of seals required	1 x EFD
Weight	0.21 kg

## Accessories

- EFMS mounting bracket set

## Planning instructions

- Moulded part with a shallow sleeve form